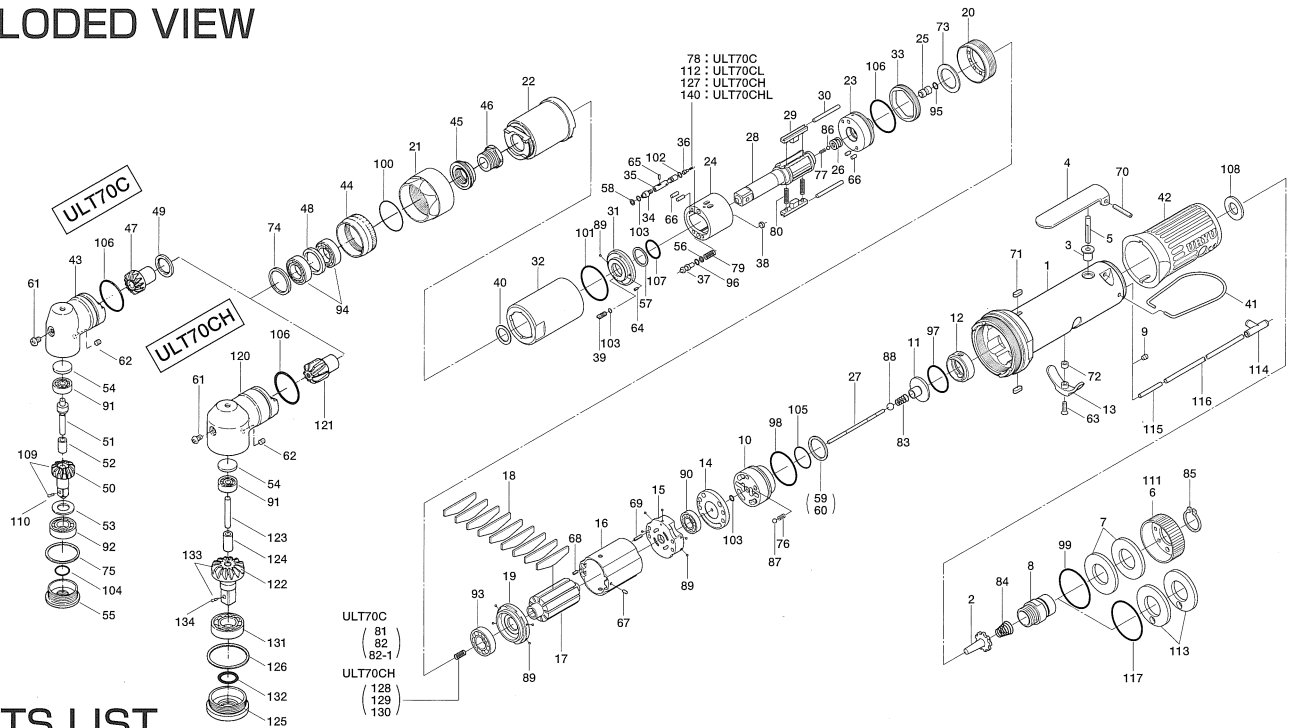


ULT70C & 70CH SERIES OIL-PULSE WRENCHES

EXPLODED VIEW



PARTS LIST

| Index No. | Code No. | Parts Name | Quantity | Index No. | Code No. | Parts Name | Quantity | Index No. | Code No. | Parts Name | Quantity |
|---------------------|-----------|----------------------------------|----------|-------------------------|-----------|--------------------------------|----------|---|-----------|---------------------------------|----------|
| Common Parts | | | | | | | | | | | |
| # 1 | 127-025-7 | Casing | 1 | #57 | 944-013-0 | Supporting Ring (P12) | 1 | #49 | 179-425-6 | Driving Gear Spacer | 1 |
| # 2 | 259-100-0 | Valve | 1 | #58 | 944-203-0 | Supporting Ring (3.1×5.1) | 1 | #50 | 020-430-1 | Driven Gear (O) | 1 |
| # 3 | 161-103-3 | Valve Rod Bushing | 1 | #59 | 944-216-0 | Supporting Ring (14×20×1.85) | 1 | #51 | 188-431-7 | Driven Gear Spindle | 1 |
| # 4 | 196-107-7 | Valve Lever | 1 | #60 | 944-218-0 | Supporting Ring (14×20×1.9) | 1 | #52 | 020-432-1 | Driven Gear Collar | 1 |
| # 5 | 128-104-8 | Valve Rod | 1 | #61 | 945-949-0 | Hexagon Head Bolt (M5×6) | 1 | #53 | 020-433-1 | Driven Gear Spacer | 1 |
| # 6 | 128-782-8 | Exhaust Cover | 1 | #62 | 954-206-0 | Allen Head Cone Screw (M5×6) | 1 | #55 | 179-488-6 | Angle Casing Cover | 1 |
| # 7 | 128-835-8 | Filter (K200) | 2 | #63 | 948-426-0 | Allen Flush Head Screw (M3×12) | 1 | #75 | 975-836-0 | Adjusting Spacer (36×32.5×1) | 1 |
| # 8 | 128-091-8 | Air Inlet Bushing | 1 | #64 | 969-449-0 | Pin (G) (3×6) | 1 | #78 | 976-604-0 | Spring (2.9×7.1) (0.45) | 1 |
| # 9 | 147-064-6 | Filler | 1 | #65 | 970-013-0 | Pin (H) (1.5×4) | 1 | #81 | 976-650-0 | Spring (3.3×16) (0.45) Standard | 1 |
| #10 | 129-253-2 | Shut-Off Valve Bushing | 1 | #66 | 970-204-0 | Pin (H) (3×6) | 4 | #82 | 976-697-0 | Spring (3.3×17) (0.45) Strong | 1 |
| #11 | 145-254-6 | Shut-Off Valve | 1 | #67 | 971-102-0 | Pin (2×3.8) | 1 | #82-1 | 976-661-0 | Spring (3.3×17) (0.4) Weak | 1 |
| #12 | 129-684-6 | Bumper Spacer | 1 | #68 | 973-008-0 | Roll Pin (2×8) | 1 | #92 | 982-101-0 | Ball Bearing (6001) | 1 |
| #13 | 161-212-3 | Reverse Lever | 1 | #69 | 973-018-0 | Roll Pin (2×18) | 1 | #104 | 990-910-0 | O-Ring (SNS-12.5) | 1 |
| #14 | 128-291-8 | Rear Plate Spacer | 1 | #70 | 973-122-0 | Roll Pin (3×22) | 1 | #109 | 891-346-1 | Driven Gear Assembly | 1 |
| #15 | 129-285-2 | Rear Plate | 1 | #71 | 974-008-0 | Key (3×8) | 2 | #110 | 891-300-1 | Socket Pin Assembly | 1 |
| #16 | 129-286-7 | Cylinder | 1 | #72 | 975-004-0 | Spacer (5.5×3.1×2.7) | 1 | Parts for ULT70CH | | | |
| #17 | 129-287-6 | Rotor | 1 | #73 | 975-752-0 | Adjusting Spacer (15×10×1) | 1 | #120 | 171-441-0 | Angle Casing | 1 |
| #18 | 129-288-6 | Blade (PC) | 9 | #74 | 975-803-0 | Adjusting Spacer (30×26×1) | 1 | #121 | 171-420-0 | Driving Gear | 1 |
| #19 | 128-289-8 | Front Plate | 1 | #76 | 976-006-0 | Spring (3×5) (0.4) | 1 | #122 | 171-430-0 | Driven Gear (O) | 1 |
| #20 | 127-036-7 | Hammer Casing Connector | 1 | #77 | 976-645-0 | Spring (2.4×5) (0.3) | 1 | #123 | 171-431-0 | Driven Gear Spindle | 1 |
| #21 | 180-081-4 | Front Case Nut | 1 | #79 | 976-666-0 | Spring (4.3×23) (0.55) | 1 | #124 | 171-432-0 | Driven Gear Collar | 1 |
| #22 | 127-439-7 | Front Casing | 1 | #80 | 976-788-0 | Spring (3.5×25) (0.45)WPC | 2 | #125 | 171-488-0 | Angle Casing Cover | 1 |
| #23 | 147-901-6 | Rear Liner Plate | 1 | #83 | 977-045-0 | Cone Spring (4.0×4.6×9) (0.45) | 1 | #126 | 975-875-0 | Adjusting Spacer (44×40.2×1) | 1 |
| #24 | 147-902-6 | Liner | 1 | #84 | 977-227-0 | Cone Spring (9×12×25) (0.8) | 1 | #127 | 976-835-0 | Spring (2.75×7.2) | 1 |
| #25 | 145-546-6 | Piston | 1 | #85 | 979-358-0 | Inner Snap Ring (ISTW-17) | 1 | #128 | 976-650-0 | Spring (3.3×16) Standard | 1 |
| #26 | 145-929-6 | Check Valve Cover | 1 | #86 | 981-001-0 | Ball (3/32) | 1 | #129 | 976-662-0 | Spring (3.3×18) Strong | 1 |
| #27 | 129-130-6 | Operating Rod (2.1×70.7) | 1 | #87 | 981-002-0 | Ball (1/8) | 1 | #130 | 976-661-0 | Spring (3.3×17) Weak | 1 |
| #28 | 18E-319-3 | Anvil | 1 | #88 | 981-003-0 | Ball (5/32) | 1 | #131 | 982-103-0 | Ball Bearing (6003) | 1 |
| #29 | 147-440-6 | Driving Blade | 2 | #89 | 981-045-0 | Ball (1.5mm) | 10 | #132 | 990-156-0 | O-Ring (SNS-16) | 1 |
| #30 | 147-974-6 | Roller (2.5×28) | 2 | #90 | 982-014-0 | Ball Bearing (607) | 1 | #133 | 891-428-1 | Driven Gear Assembly | 1 |
| #31 | 147-904-6 | Front Liner Plate | 1 | #91 | 982-021-0 | Ball Bearing (626) | 1 | #134 | 891-304-1 | Socket Pin Assembly | 1 |
| #32 | 147-905-6 | Liner Casing | 1 | #93 | 982-902-0 | Ball Bearing (6901) | 1 | Parts for ULT70CL | | | |
| #33 | 147-906-6 | Liner Casing Setter | 1 | #94 | 982-904-0 | Ball Bearing (6903) | 2 | #111 | 129-782-0 | Exhaust Cover | 1 |
| #34 | 174-907-2 | Relief Valve Spindle | 1 | #95 | 990-305-0 | O-Ring (ARP568-003) (KS) | 1 | #112 | 976-673-0 | Spring (2.8×7.8) | 1 |
| #35 | 127-970-7 | Relief Valve | 1 | #96 | 990-320-0 | O-Ring (ARP568-003) | 1 | Parts for ULT70CHL | | | |
| #36 | 144-270-0 | Pressure Regulator Valve | 1 | #97 | 990-329-0 | O-Ring (JW1530-19) | 1 | #140 | 976-836-0 | Spring (2.9×7) | 1 |
| #37 | 145-972-6 | Accumulator | 1 | #98 | 990-331-0 | O-Ring (JW1530-21) | 1 | Parts for TM-Type | | | |
| #38 | 145-908-7 | Accumulator Cover | 1 | #99 | 990-603-0 | O-Ring (28.5×1.3) | 1 | Remove #9 and #99 first and mount following | | | |
| #39 | 194-742-0 | Oil Plug | 1 | #100 | 990-605-0 | O-Ring (25×1.45) | 1 | #113 | 851-053-1 | Filter (K200) | 2 |
| #40 | 145-327-7 | Anvil Front Spacer | 1 | #101 | 990-334-0 | O-Ring (JW1530-24) | 1 | #114 | 909-442-0 | Quick Exhaust (AQ240F-04-00) | 1 |
| #41 | 191-790-1 | Suspension Ring | 1 | #102 | 990-621-0 | O-Ring (3.8×1.8×1.0) | 1 | #115 | 935-240-0 | Nylon Tube (18NY) | 1 |
| #42 | 129-842-6 | Handle Protector | 1 | #103 | 990-900-0 | O-Ring (SNS-2) | 3 | #116 | 935-350-0 | Polyurethane Hose (F-1504) | 1 |
| #44 | 127-382-7 | Hammer Casing Nut | 1 | #105 | 990-914-0 | O-Ring (SNS-16) | 1 | #117 | 990-333-0 | O-Ring (JW1530-23) | 1 |
| #45 | 160-797-7 | Ball Bearing Setting Spindle | 1 | #106 | 990-923-0 | O-Ring (SNS-26) | 2 | ACCESSORIES | | | |
| #46 | 160-799-7 | Ball Bearing Setting Spindle Nut | 1 | #107 | 992-020-0 | SU-Ring (Q12) (NTN) | 1 | #118 | 939-108-0 | Allen Wrench (1.5) | 1 |
| #48 | 179-423-6 | Driving Gear Bushing Spacer | 1 | #108 | 996-424-0 | Urethane Packing (16×9×2) | 1 | #119 | 909-449-0 | Speed Controller (AS1001F-04) | 1 |
| #54 | 562-391-7 | Spindle Upper Plate | 1 | Parts for ULT70C | | | | #135 | 940-114-0 | Air Hose Nipple | 1 |
| #56 | 944-002-0 | Supporting Ring (2.6×4.5×1) | 1 | #43 | 160-441-7 | Angle Casing | 1 | | | | |
| | | | | #47 | 179-420-6 | Driving Gear | 1 | | | | |

When ordering spare parts, please Specify tool type, code number and part name.

Printed Japan



URYU SEISAKU, LTD. Osaka Japan

For further information, please contact at any time your nearest URYU distributor.

OKA-521-15-03-05-500