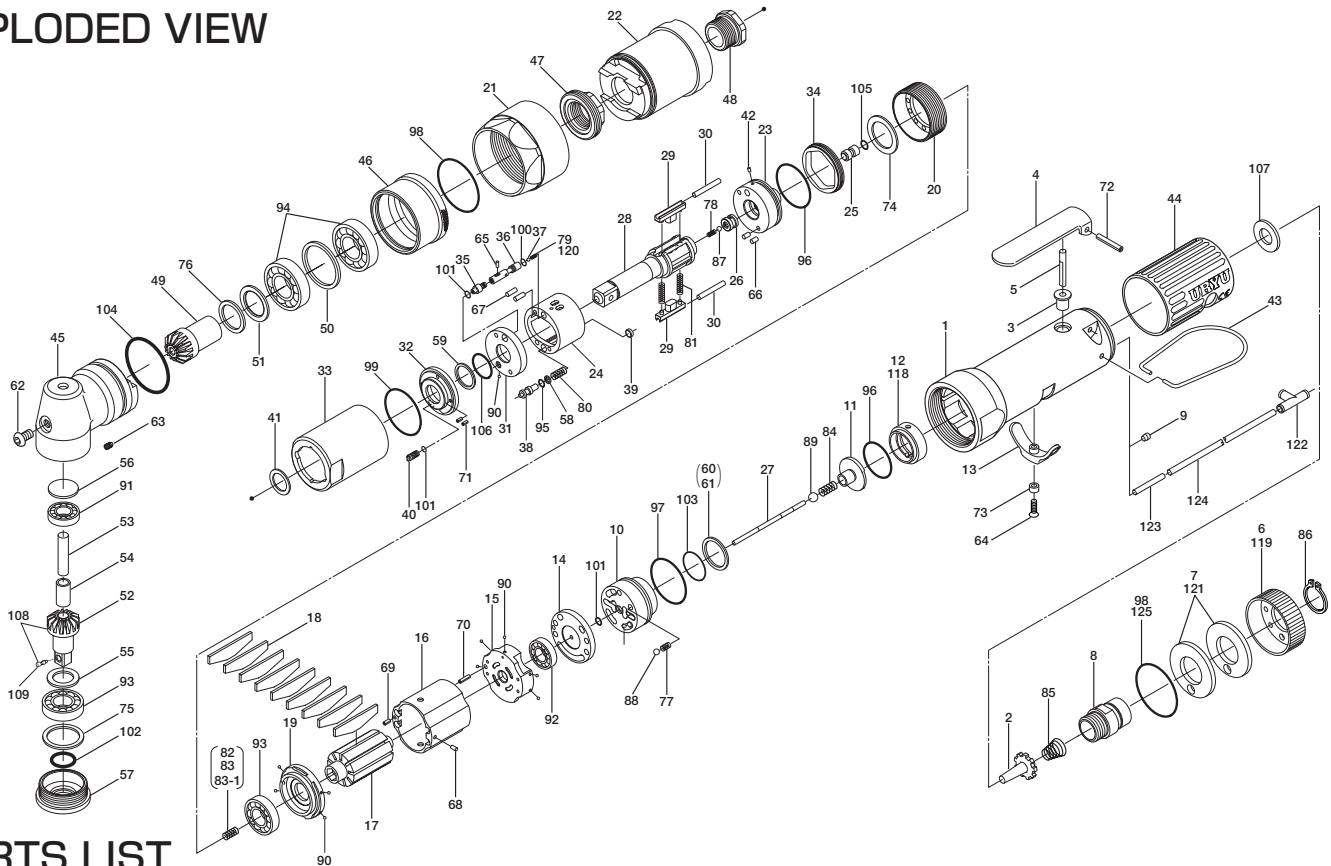


ULT50C SERIES OIL-PULSE WRENCHES

EXPLODED VIEW



PARTS LIST

Index No.	Code No.	Parts Name	Quantity	Index No.	Code No.	Parts Name	Quantity	Index No.	Code No.	Parts Name	Quantity
# 1	127-025-3	Casing	1	#44	128-842-8	Handle Protector	1	#86	979-358-0	Inner Snap Ring(ISTW-17)	1
# 2	259-100-0	Valve	1	#45	127-441-3	Angle Casing	1	#87	981-001-0	Ball(3/32)	1
# 3	161-103-3	Valve Rod Bushing	1	#46	127-382-3	Hammer Casing Nut	1	#88	981-002-0	Ball(1/8)	1
# 4	196-107-7	Valve Lever	1	#47	127-797-3	Ball Bearing Setting Spindle	1	#89	981-003-0	Ball(5/32)	1
# 5	128-104-8	Valve Rod	1	#48	127-799-3	Ball Bearing Setting Spindle Nut	1	#90	981-045-0	Ball(1.5mm)	10
# 6	128-782-8	Exhaust Cover	1	#49	127-420-3	Driving Gear	1	#91	982-013-0	Ball Bearing(606)	1
# 7	128-835-8	Filter(K200)	2	#50	179-423-3	Driving Gear Bushing Spacer	1	#92	982-014-0	Ball Bearing(607)	1
# 8	128-091-8	Air Inlet Bushing	1	#51	179-425-3	Driving Gear Spacer	1	#93	982-902-0	Ball Bearing(6901)	2
# 9	147-064-6	Filler	1	#52	008-430-1	Driven Gear(O)	1	#94	982-903-0	Ball Bearing(6902)	2
#10	128-253-8	Shut-Off Valve Bushing	1	#53	008-431-1	Driven Gear Spindle	1	#95	990-320-0	O-Ring(ARP568-003)	1
#11	145-254-6	Shut-Off Valve	1	#54	008-432-1	Driven Gear Spindle Collar	1	#96	990-329-0	O-Ring(JW1530-19)	2
#12	128-684-8	Bumper Spacer	1	#55	008-433-1	Driven Gear Spacer	1	#97	990-331-0	O-Ring(JW1530-21)	1
#13	161-212-3	Reverse Lever	1	#56	179-391-5	Spindle Upper Plate	1	#98	990-603-0	O-Ring(28.5×1.3)	1
#14	128-291-8	Rear Plate Spacer	1	#57	179-488-3	Angle Casing Cover	1	#99	990-605-0	O-Ring(25×1.45)	2
#15	128-285-8	Rear Plate	1	#58	944-002-0	Supporting Ring(2.6×4.5×1)	1	#100	990-621-0	O-Ring(3.8×1.8×1.0)	1
#16	128-286-8	Cylinder	1	#59	944-212-0	Supporting Ring(12×16×1.5)	1	#101	990-900-0	O-Ring(SNS-2)	3
#17	145-287-0	Rotor	1	#60	944-216-0	Supporting Ring(14×20×1.85)	1	#102	990-910-0	O-Ring(SNS-12.5)	1
#18	145-288-0	Blade(PC)	9	#61	944-218-0	Supporting Ring(14×20×1.9)	1	#103	990-914-0	O-Ring(SNS-16)	1
#19	128-289-8	Front Plate	1	#62	945-949-0	Hexagon Round Head Bolt(M5×6)	1	#104	990-915-0	O-Ring(SNS-29)	1
#20	127-036-3	Hammer Casing Connector	1	#63	954-105-0	Allen Head Screw(M4×5)	1	#105	990-305-0	O-Ring(ARP568-003)(KS)	1
#21	127-081-3	Locking Nut	1	#64	948-426-0	Allen Flush Head Screw(M3×12)	1	#106	992-020-0	SU-Ring(Q12)(NTN)	1
#22	127-439-3	Front Casing	1	#65	970-013-0	Pin(H)(1.5×4)	1	#107	996-424-0	Packing(16×9×2)	1
#23	145-901-0	Rear Liner Plate	1	#66	970-130-0	Pin(H)(2.45×4.5)	2	#108	891-345-1	Driven Gear Assembly	1
#24	145-902-0	Liner	1	#67	970-131-0	Pin(H)(2.45×9.5)	2	#109	891-300-1	Socket Snap Pin Assembly	2
#25	145-546-6	Piston	1	#68	971-102-0	Pin(2×3.8)	1	Parts for ULT50CL			
#26	145-929-6	Check Valve Cover	1	#69	973-008-0	Roll Pin(2×8)	1	#118	129-684-0	Bumper Spacer	1
#27	128-130-8	Operating Rod(2.1×58.7)	1	#70	973-018-0	Roll Pin(2×18)	1	#119	129-782-0	Exhaust Cover	1
#28	145-319-0	Anvil	1	#71	973-040-0	Roll Pin(1.5×5)	2	#120	976-831-0	Spring(2.9×7.7)(0.4)	1
#29	145-440-0	Driving Blade	2	#72	973-122-0	Roll Pin(3×22)	1	Parts for TM-Type			
#30	145-974-0	Roller(2.5×21)	2	#73	975-004-0	Spacer(5.5×3.1×2.7)	1	#121	851-053-1	Filter(K200)	2
#31	145-973-6	Liner Casing Spacer	1	#74	975-752-0	Adjusting Spacer(15×10×t)	1	#122	909-442-0	Quick Exhaust(AQ240F-04-00)	1
#32	145-904-6	Front Liner Plate	1	#75	975-806-0	Adjusting Spacer(24×20×t)	1	#123	935-240-0	Nylon Tube(18NY)	1
#33	145-905-0	Liner Casing	1	#76	975-807-0	Adjusting Spacer(28×25×t)	1	#124	935-350-0	Polyurethane Hose(F1504)	1
#34	145-906-6	Liner Casing Cover	1	#77	976-006-0	Spring(3×5)(0.4)	1	#125	990-333-0	O-Ring(JW1530-23)	1
#35	145-907-6	Relief Valve Spindle	1	#78	976-653-0	Spring(2.4×5)(0.26)	1	ACCESSORIES			
#36	144-970-0	Relief Valve	1	#79	976-632-0	Spring(2.8×7.7)(0.4)	1	#126	939-108-0	Allen Wrench(1.5mm)	1
#37	144-270-0	Pressure Regulator Valve	1	#80	976-674-0	Spring(4.3×14)(0.55)	1	#127	909-449-0	Speed Controller(AS1001F-04)	1
#38	145-972-6	Accumulator	1	#81	976-791-0	Spring(3.3×21)(0.4)WPC	2	#128	940-114-0	Air Hose Nipple(NPT 1/4×3/8)	1
#39	145-908-7	Accumulator Cover	1	#82	976-650-0	Spring(3.3×16)(0.45)	1				
#40	194-742-0	Oil Plug	1	#83	976-662-0	Spring(3.3×18)	1				
#41	145-327-7	Anvil Front Spacer	1	#83-1	976-661-0	Spring(3.3×17)	1				
#42	150-064-5	Plug	1	#84	977-044-0	Cone Spring(4.1×4.7×10)(0.45)	1				
#43	191-790-1	Suspension Ring	1	#85	977-227-0	Cone Spring(9×12×25)(0.8)	1				

When ordering spare parts, please Specify tool type, code number and part name.

Printed Japan



URYU SEISAKU, LTD. Osaka Japan

For further information, please contact at any time your nearest URYU distributor.

OKA-519-15-03-02-0302