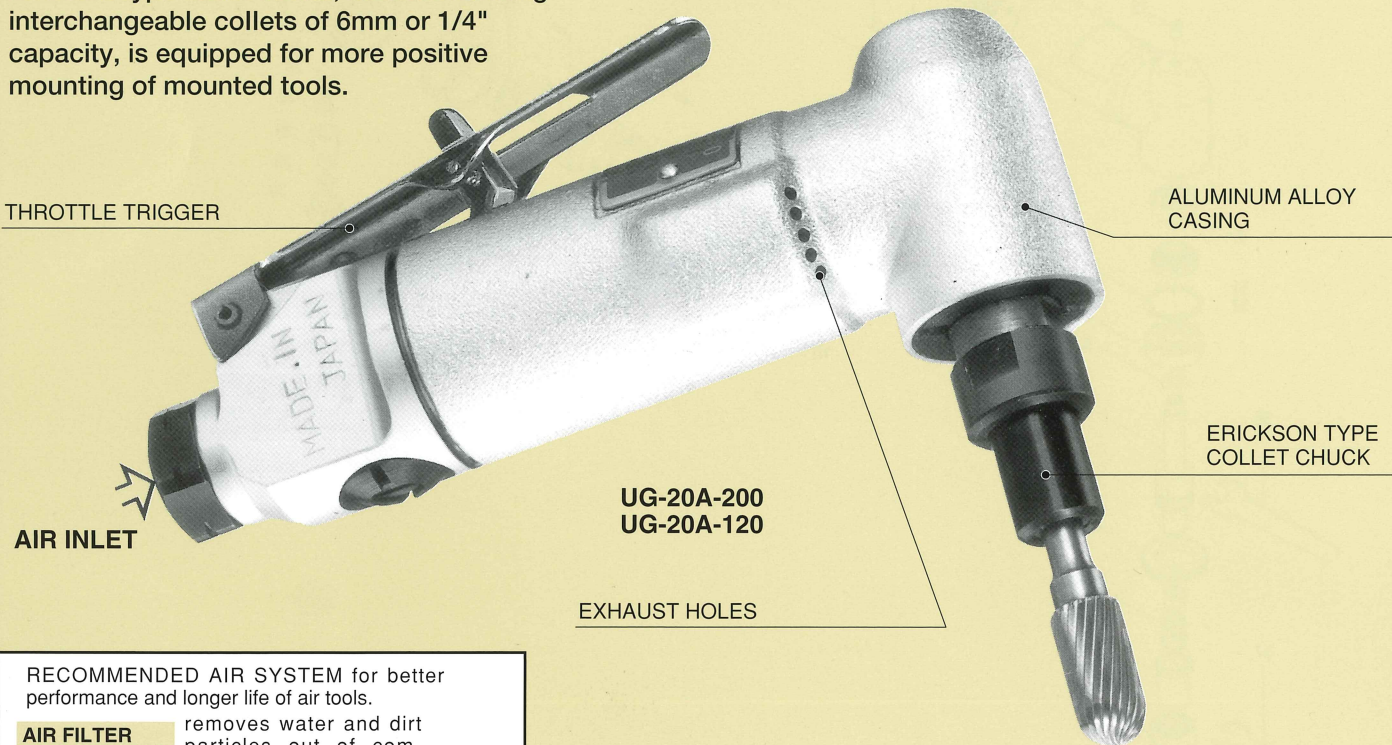


## UG-20A SERIES ANGLE DIE GRINDERS

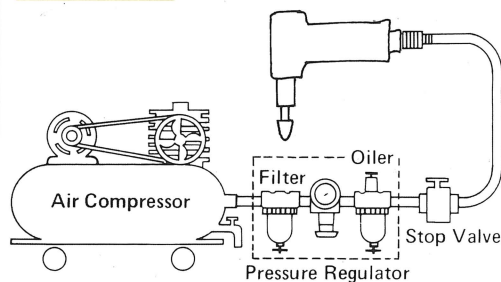
These UG-20A series angle die grinders are easy to use for deburring, blending, sanding, contouring etc., especially in hard-to-reach areas.

Two speeds are available with different couples of angle gears: 20,000 r.p.m. for sanding discs upto 2" diameter, small mounted wheels, carbide burrs up to 1/2", cartridge rolls, felt bobs, etc. - 12,000 r.p.m. for sanding discs up to 3" diameter. Erickson type collet chuck, accommodating interchangeable collets of 6mm or 1/4" capacity, is equipped for more positive mounting of mounted tools.



RECOMMENDED AIR SYSTEM for better performance and longer life of air tools.

- AIR FILTER** removes water and dirt particles out of compressed air.
- PRESSURE REGULATOR** gives steady, dependable regulation at 0.6MPa (85 psi.), minimum pressure drop.
- OILER (LUBRICATOR)** assures longer, more dependable tool life.



### IMPORTANT!!!

- \* **Safety Use:** Strictly comply with your local safety regulations for portable power tools.
- \* **Air Pressure:**— 0.6MPa(85 psi) Air Pressure is recommended for the most efficient performance. Too high air pressure will cause damage.
- \* **Lubrication:**— **For Air Motor**—Supply Turbine Oil properly through Air Inlet or Line Oiler every before and after operation. (for examples, MOBIL TURBINE OIL #32, SHELL TURBINE OIL #32 and or equivalents.)
- \* **For Bearings**— Supply recommended high quality Grease properly (for examples, SHELL ALVANIA NO.2, RETINAX AM, MOBILPLEX 2, or equivalents) once every three months and when the tool is overhauled. Over-greasing will cause dull motion or heating.
- \* **Dry & Clean Air:**— Drain daily, and install filter at or near the take-off point to prevent trouble from foreign matter.
- \* **Air Hose & Joints:**— Use Air Hose (the shorter, the better), Joints and other fittings of good condition and of proper size to avoid pressure drop.
- \* **Regular Overhaul:**— At least once every three months regular or periodical overhaul by a competent person is needed for best performance and trouble-less operation.
- \* **Genuine Parts:**— Use only URYU's genuine spare parts for replacement.

### SPECIFICATIONS (Subject to change without notice.)

※The uncertainty in the sound levels is 3dB(A).

Model	Max. Free Speed (about)	overall Length (about)		Net Weight (about)		Average Air Consumption		Sound Pressure Level (L <sub>PA</sub> )	Sound Power Level (L <sub>WA</sub> )	Vibration Total Value (A <sub>Wk</sub> )	Vibration Uncertainty (K)
	r.p.m.	in	mm	lb	kg	ft <sup>3</sup> /min	m <sup>3</sup> /min	dB (A)	dB (A)	m/sec <sup>2</sup>	m/sec <sup>2</sup>
UG-20A-200	20,000	5 3/16	131	1.1	0.5	10.7	0.3	75	-	2.6	0.7
UG-20A-120	12,000	5 3/16	131	1.1	0.5	10.7	0.3	76	-	3.0	0.7

Recommended Air Pressure : 0.6MPa (85psi), Air Inlet Thread : NPT 1/4", Air Hose Size: 9.5mm (3/8"), Standard Accessories: Spanners, Air Hose Nipple

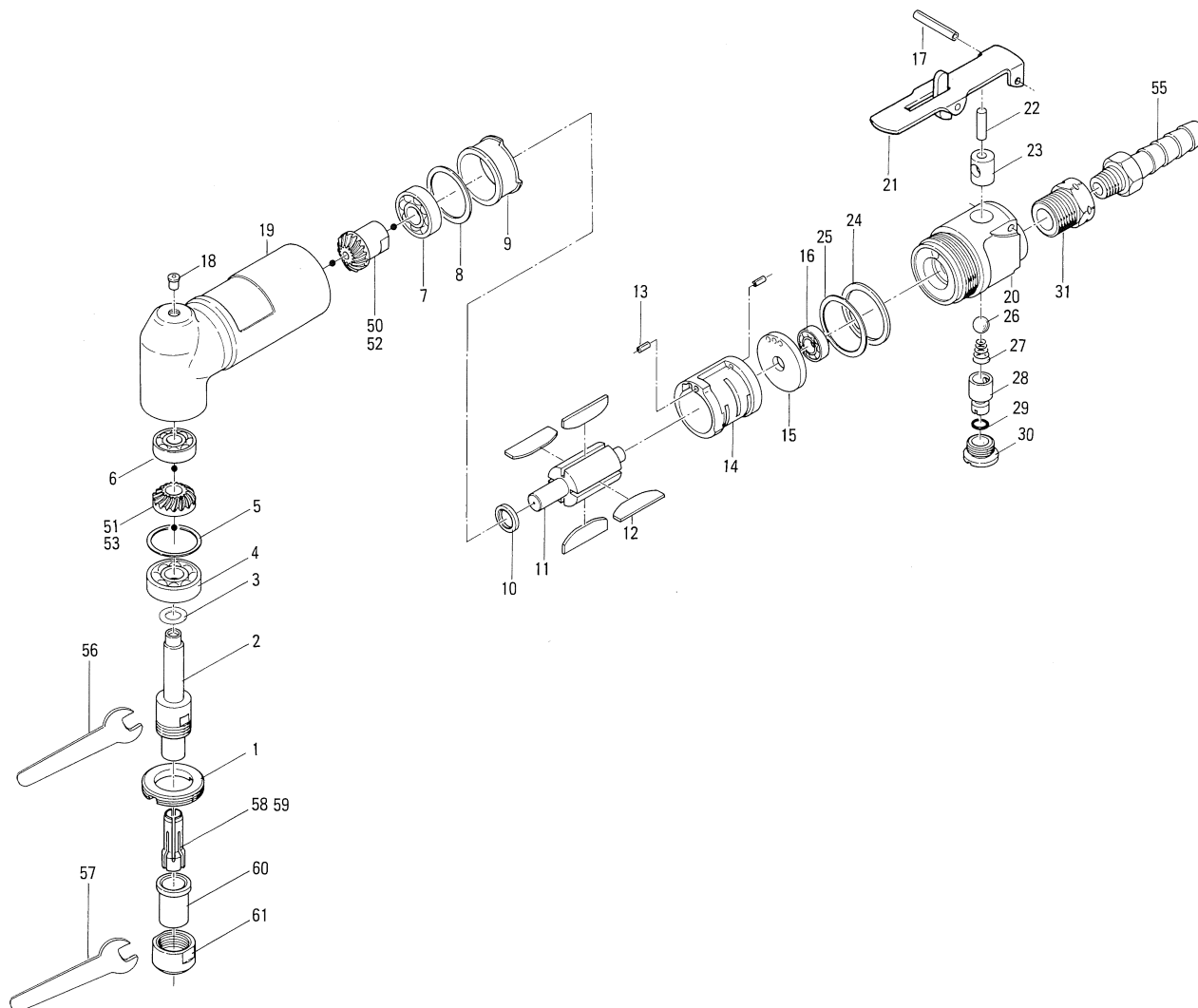


**URYU SEISAKU, LTD.**  
Osaka, Japan

OKA-209-15-05-20-1010

# UG-20A series Angle Die Grinders

## EXPLODED VIEW



## PARTS LIST

Index No.	Code No.	Parts Name	Quantity	Index No.	Code No.	Parts Name	Quantity	Index No.	Code No.	Parts Name	Quantity
<b>Common Parts</b>				#16	982-033-0	Ball Bearing (696)	1	<b>Parts for UG-20A-200</b>			
# 1	517-065-4	Casing Front Plate	1	#17	973-124-0	Roll Pin (3×24)	1	#50	517-420-3	Driving Gear	1
# 2	517-390-4	Wheel Spindle	1	#18	968-130-0	Grease Cup (3/16)	1	#51	517-430-3	Driven Gear	1
# 3	975-108-0	Spacer (19×8.1×2H)	1	#19	517-025-3	Casing	1	<b>Parts for UG-20A-120</b>			
# 4	982-053-0	Ball Bearing (628Z)	1	#20	517-014-3	Valve Body	1	#52	517-420-5	Driving Gear	1
# 5	975-806-0	Adjusting Spacer (24×20×T)	1	#21	500-914-7	Valve Lever Assy	1	#53	517-430-5	Driven Gear	1
# 6	982-014-0	Ball Bearing (607)	1	#22	970-317-0	Pin (H)(4×17)	1	<b>ACCESSORIES</b>			
# 7	982-045-0	Ball Bearing (608Z)	1	#23	517-101-3	Valve Bushing	1	#55	940-114-0	Hose Nipple (NPT1/4×3/8)	1
# 8	975-799-0	Adjusting Spacer (27×23×T)	1	#24	975-795-0	Adjusting Spacer(29×26×T)	1	#56	936-514-0	Spanner (14)	1
# 9	517-289-3	Front Plate	1	#25	975-228-0	Spacer (29×26×1.2)	1	#57	936-517-0	Spanner (17)	1
#10	517-305-3	Front Plate Spacer	1	#26	981-207-0	Ball (9/32)	1	#58	923-201-0	Ericson Chuck (1/4)	1
#11	517-287-3	Rotor	1	#27	977-060-0	Cone Spring (5×8×12)	1	#59	923-207-0	Ericson Chuck (6mm)	1
#12	517-288-3	Blade	4	#28	517-240-2	Regulator Valve	1	#60	923-203-0	Ericson Chuck Holder	1
#13	973-005-0	Roll Pin (2×5)	2	#29	990-903-0	O-Ring (SNS-5)	1	#61	923-204-0	Ericson Chuck Nut	1
#14	517-286-3	Cylinder	1	#30	517-019-3	Valve Cover	1				
#15	517-285-3	Rear Plate	1	#31	546-091-1	Air Inlet Bushing	1				

When ordering spare parts, please specify tool type, code number and part name.

Printed in Japan

**URYU SEISAKU, LTD.** Osaka, Japan