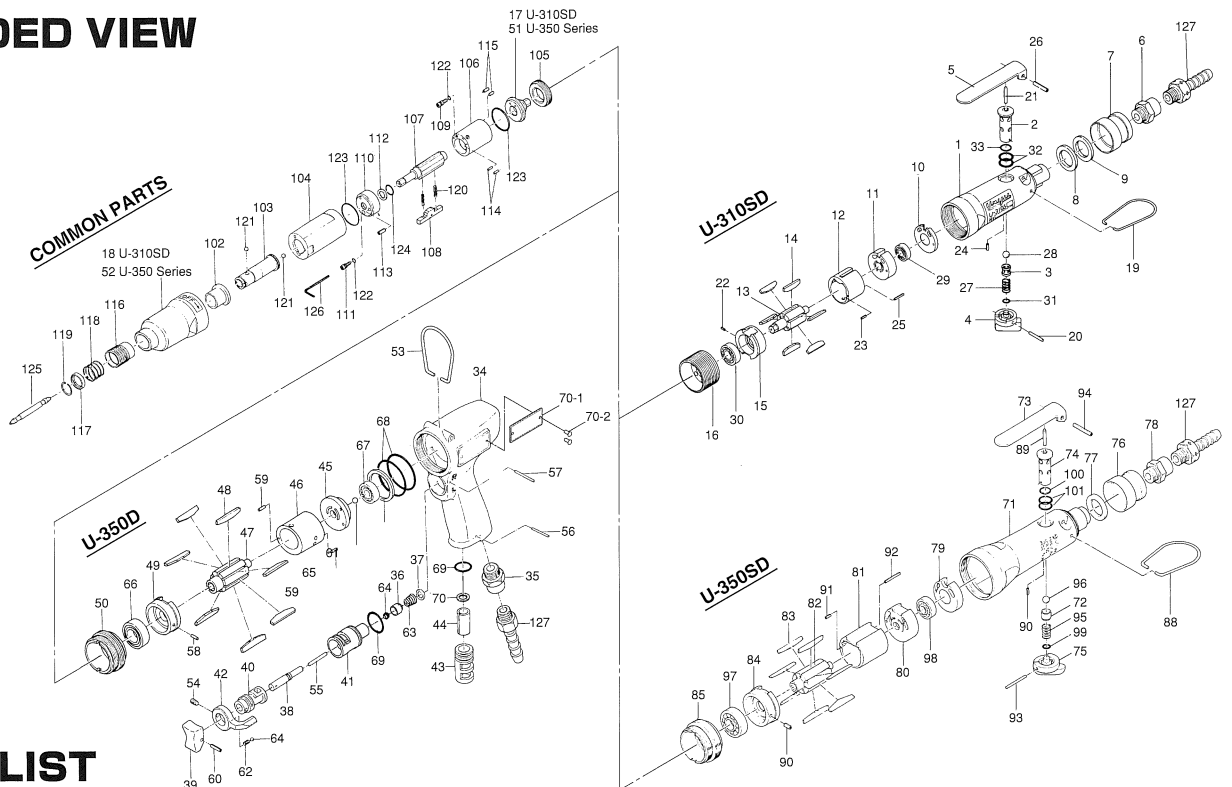


U-310SD, U-350D & U-350SD OIL-PULSE WRENCHES

EXPLODED VIEW



PARTS LIST

Index No.	Code No.	Parts Name	Quantity	Index No.	Code No.	Parts Name	Quantity	Index No.	Code No.	Parts Name	Quantity
U-310SD Handle Components											
# 1	196-025-2	Handle	1	#45	182-285-2	Rear Plate	1	#88	010-790-1	Suspension Ring	1
# 2	196-210-6	Reverse Valve	1	#46	192-286-4	Cylinder	1	#89	970-217-0	Pin (G)(3×17)	1
# 3	196-100-6	Valve	1	#47	177-287-0	Rotor	1	#90	973-005-0	Roll Pin (2×5)	2
# 4	410-212-1	Reverse Lever	1	#48	192-288-4	Blade	7	#91	973-006-0	Roll Pin (2×6)	1
# 5	196-107-7	Valve Lever	1	#49	192-289-4	Front Plate	1	#92	973-018-0	Roll Pin (2×18)	1
# 6	480-091-8	Air Inlet Bushing	1	#50	192-035-4	Handle Connector	1	#93	973-022-0	Roll Pin (2×22)	1
# 7	408-782-1	Exhaust Cover	1	#51	177-901-0	Liner Rear Plate	1	#94	973-122-0	Roll Pin (3×22)	1
# 8	196-835-6	Filter (50 μ)	1	#52	192-439-4	Front Casing	1	#95	977-150-0	Cone Spring (6.8×8.5×8)	1
# 9	408-835-1	Filter (100 μ)	1	#53	401-790-1	Suspension Ring	1	#96	981-206-0	Ball (1/4)	1
#10	196-291-6	Rear Plate Spacer	1	#54	952-106-0	Allen Head Screw (M4×6)	1	#97	982-100-0	Ball Bearing (6000)	1
#11	196-285-6	Rear Plate	1	#55	969-412-0	Pin (G)(2×12)	1	#98	982-401-0	Ball Bearing (EE-2)	1
#12	196-286-8	Cylinder	1	#56	971-120-0	Pin (2×20)	1	#99	990-321-0	O-Ring (APR568-104)	1
#13	196-287-6	Rotor	1	#57	971-123-0	Pin (2×23)	1	#100	990-907-0	O-Ring (SNS-9)	1
#14	196-288-6	Blade	6	#58	973-005-0	Roll Pin (2×5)	1	#101	990-909-0	O-Ring (SNS-11.2)	2
#15	196-289-8	Roll Plate	1	#59	973-008-0	Roll Pin (2×8)	2	COMMON PARTS			
#16	196-294-6	Cylinder Set Screw	1	#60	973-014-0	Roll Pin (2×14)	1	#102	190-328-6	Anvil Bushing	1
#17	196-901-6	Liner Rear Plate	1	#61	975-251-0	Spacer (32.5×26×2)	1	#103	196-350-7	Driver Anvil	1
#18	196-439-6	Front Casing	1	#62	976-006-0	Spring (3×5)	1	#104	196-905-6	Liner Casing	1
#19	401-790-1	Suspension Ring	1	#63	976-229-0	Spring (3.2×13)	1	#105	196-906-6	Liner Casing Setter	1
#20	971-117-0	Pin (2×17)	1	#64	981-002-0	Ball (1/8)	2	#106	196-902-6	Liner	1
#21	972-036-0	Needle Roller (2.5×15.8)	1	#65	981-045-0	Ball (1.5)	1	#107	196-319-6	Anvil	1
#22	973-000-0	Roll Pin (1.5×4)	1	#66	982-100-0	Ball Bearing (6000)	1	#108	192-440-4	Driving Blade	1
#23	973-001-0	Roll Pin (1.5×6)	1	#67	982-401-0	Ball Bearing (EE2)	1	#109	196-970-6	Relief Valve	1
#24	973-006-0	Roll Pin (2×6)	1	#68	990-337-0	O-Ring (JW1530-27)	2	#110	196-904-6	Liner Front Plate	1
#25	973-047-0	Roll Pin (1.5×14)	1	#69	990-912-0	O-Ring (SNS-14)	2	#111	196-742-6	Oil Plug	1
#26	973-122-0	Roll Pin (3×22)	1	#70	996-402-0	Packing (11.5×3.7×2)	1	#112	944-006-0	Back-up Ring (5.85×9.1×1)	1
#27	976-149-0	Spring (7×10)	1	#70-1	192-924-4	Name Plate U-350D	1	#113	969-449-0	Pin (G)(3×6)	1
#28	981-205-0	Ball (1/8)	1	#70-2	930-205-0	Driver Rivet	2	#114	972-010-0	Roller Pin (1.5×6.8)	2
#29	982-033-0	Ball Bearing (696)	1	U-350SD Handle Components							
#30	982-035-0	Ball Bearing (698)	1	#71	193-025-3	Handle	1	#115	972-011-0	Roller Pin (1.5×4.8)	2
#31	990-002-0	O-Ring (P4)	1	#72	480-100-9	Valve	1	#116	011-351-1	Bit Sleeve	1
#32	990-008-0	O-Ring (P10)	2	#73	196-107-7	Valve Lever	1	#117	011-352-1	Bit Spacer	1
#33	990-205-0	O-Ring (JW1516-5)	1	#74	177-210-3	Reverse Valve	1	#118	976-327-0	Spring (13.5×11)	1
U-350D Handle Components											
#34	177-025-5	Handle	1	#75	180-212-2	Reverse Lever	1	#119	978-117-0	Snap Ring (11.7×1.0)	1
#35	480-091-8	Air Inlet Bushing	1	#76	408-782-1	Exhaust Cover	1	#120	976-242-0	Spring (2.8×13.5)	2
#36	850-365-1	Valve (Slide)	1	#77	193-835-3	Filter (K50)	1	#121	981-002-0	Ball (1/8)	2
#37	850-366-1	Valve Cover (Slide)	1	#78	480-091-8	Air Inlet Bushing	1	#122	990-319-0	O-Ring (APR568-002)	2
#38	427-103-5	Valve Rod Bushing	1	#79	177-291-3	Rear Plate Spacer	1	#123	990-916-0	O-Ring (SNS18)	2
#39	177-107-5	Valve Lever	1	#80	177-285-3	Rear Plate	1	#124	990-952-0	O-Ring (P6)	1
#40	480-210-9	Reverse Valve	1	#81	193-286-3	Cylinder	1	Accessories			
#41	850-382-1	Reverse Valve Bushing	1	#82	177-287-0	Rotor	7	#125	916-810-0	Double Bit (No. 2×75)	1
#42	480-212-8	Reverse Lever	1	#83	192-288-4	Blade	1	#126	939-091-0	Allen Wrench (1.5mm)	1
#43	480-780-8	Exhaust Stack	1	#84	192-289-4	Front Plate	1	#127	940-114-0	Air Hose Nipple(NPT1/4×3/8)	1
#44	177-835-6	Filter	1	#85	192-035-4	Handle Connector	1				
				#51	177-901-0	Liner Rear Plate	1				
				#52	192-439-4	Front Casing	1				

When ordering spare parts, please specify tool type, code number and part name.

Printed in Japan



URYU SEISAKU, LTD. Osaka Japan

For further information, please contact at any time your nearest URYU distributor.

OKA-323-13-08-28-1001