

UPT (URYU Pneumatic Tools)

PB-SERIES CHIPPING HAMMERS

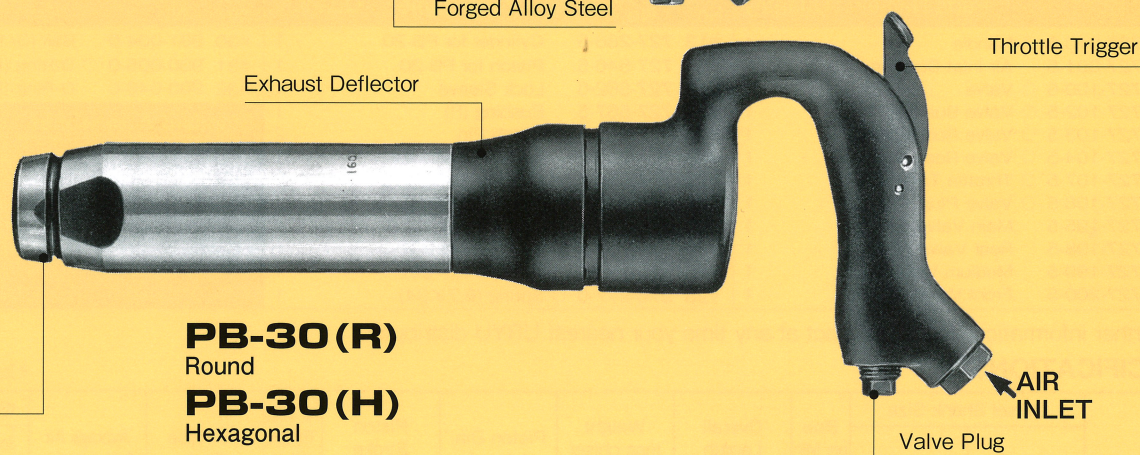
URYU'S powerful and fast-hitting CHIPPING HAMMERS offer a wide selection for the following applications.

- Heavy duty and billet chipping.
 - General chipping and calking.
 - Weld flux, paint, and rust removal.
 - Removing impurities and fins from castings.
- (Interchangeable Round(R) and Hexagonal(H) Bushing are available for each model at user's option.)



PB-20(R)
Round

PB-20(H)
Hexagonal



PB-30(R)
Round

PB-30(H)
Hexagonal

For safety use:

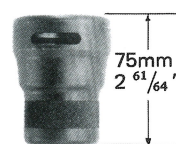
- 1) Do not idle tools.
- 2) Set the chisel retainer assembly firmly to the tool barrel.
- 3) Do not use old, worn, rusted or damaged parts.

IMPORTANT!!

1. **Lubrication:** — For Air Motor — Supply Turbine Oil properly through Air Inlet or Line Oiler every before and after operation. (For example MOBIL TURBINE OIL #32, SHELL TURBINE OIL #32, and or equivalent.)
2. **Chisel Retainer** — If required by local safety regulations, use a proper retainer.
3. **Dry & Clean Air** — Drain daily and install a Filter at or near the take-off point to prevent trouble from foreign matter.
4. **Air Hose & Fittings** — Use the Air Hose and other fittings of proper size and perfect condition.
5. **Overhaul** — Regular Overhaul once every three months is recommended for good performance.
6. **Air Pressure** — Air Pressure of 0.6MPa(85psi) is recommended for the most efficient performance. Too high air pressure will shorten tool's life.
7. **Genuine Parts:** — Use only URYU's genuine parts for replacement in repair service.

CHISEL RETAINER ASSEMBLY Code No.727-847-6 (Option)

Retainer
Code No.727-677-6



Split
Rubber Bumper
put between split steel ring
Code No.727-692-6



Lock Spring
Code No. 976-930-0



How to use:

- (1) Put a SHOULDER type Chisel into the Retainer from the front oval opening and turn it 90° to set.
- (2) Loop the Split Rubber Bumper around the chisel below the SHOULDER and toward the tip and fit them to the tool. Make sure that the Chisel SHOULDER is located crisscross to retainer's oval opening as highlighted in red with an asterisk.
- (3) Insert the Lock Spring all through the slot in the Retainer and hook the both ends firmly to lock.



URYU SEISAKU, LTD.
Osaka, Japan

OKA-012-20-08-03-0511

PB-SERIES CHIPPING HAMMERS



EXPLODED VIEW

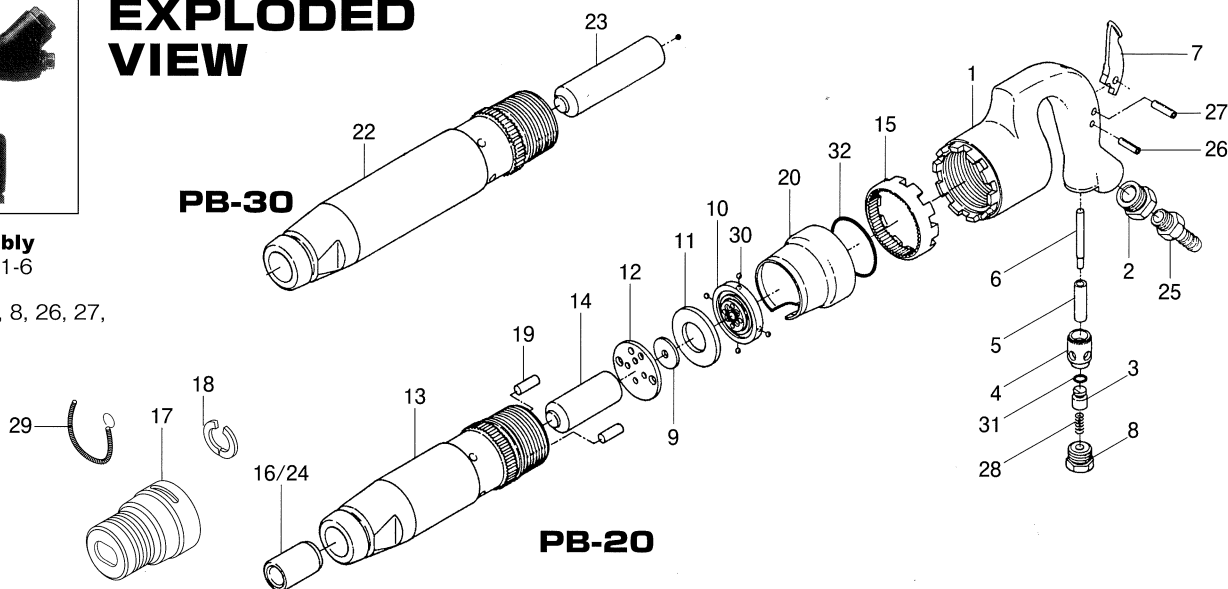
PB-30

Handle Assembly

Code No.727-001-6

Components

(#1, 3, 4, 5, 6, 7, 8, 26, 27, 28, 31)



PB-20

PARTS LIST

Handle Assembly Components are marked with "○".

Index No.	Code No.	Parts Name	Quantity	Index No.	Code No.	Parts Name	Quantity	Index No.	Code No.	Parts Name	Quantity
# 1	727-010-6	○ Handle	1	#13	727-286-5	Cylinder for PB-20	1	#30	981-004-0	Ball (3/16)	4
# 2	727-091-5	Air Inlet Bushing	1	#14	727-546-5	Piston for PB-20	1	#31	990-005-0	○ O-Ring (P7)	1
# 3	727-100-5	○ Valve	1	#15	727-562-6	Lock Sleeve	1	#32	990-046-0	O-Ring (P50)	1
# 4	727-102-5	○ Valve Bushing	1	#16	727-567-5	Bushing (R)	1	Standard Accessories			
# 5	727-103-5	○ Valve Rod Bushing	1	#19	727-761-5	Notch Pin	2	#25	940-124-0	Air Hose Nipple (NPT3/8×1/2) (7)	1
# 6	727-104-5	○ Valve Rod	1	#20	727-782-6	Exhaust Deflector	1	Optional Accessories			
# 7	727-107-5	○ Throttle Trigger	1	#22	728-286-5	Cylinder for PB-30	2	#17	727-677-6	Retainer	1
# 8	727-108-5	○ Valve Plug	1	#23	728-546-5	Piston for PB-30	1	#18	727-692-6	Rubber Bumper Assembly	1
# 9	727-195-5	Main Valve	1	#24	778-567-5	Bushing (H)	1	#21	727-847-6	Chisel Retainer Assembly (#17, #18 & #29)	1
#10	727-198-5	Rear Valve Seat	1	#26	973-323-0	○ Roll Pin (5×25)	1	#29	976-930-0	Lock Spring	1
#11	727-199-5	Medium Valve Seat	1	#27	973-345-0	○ Roll Pin (6×20)	1				
#12	727-200-5	Front Valve Seat	1	#28	976-277-0	○ Spring (6.7×34)	1				

For further information, please contact at any time your nearest URYU distributor.

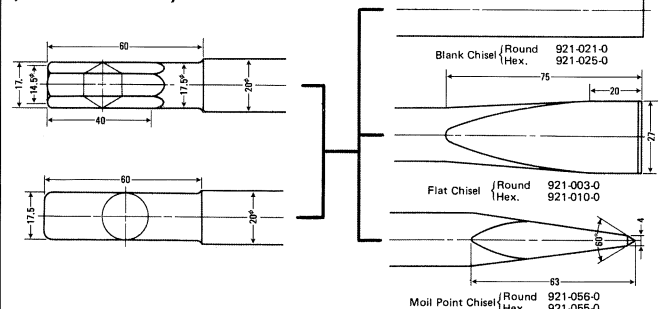
SPECIFICATIONS

* The uncertainty in the sound levels is 3dB(A).

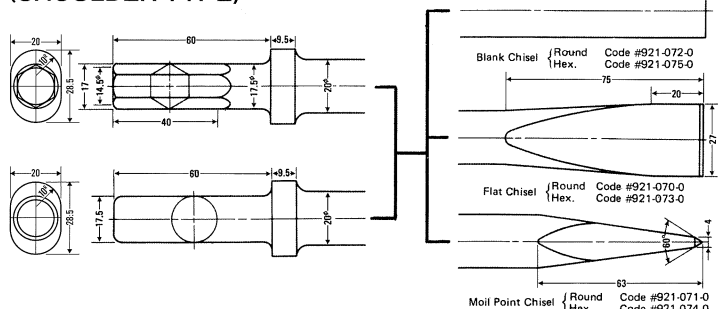
Model	Chisel Shank Size				Blow per Min (about)	Overall Length (about)		Weight less chisel (about)		Piston Dia. (about)		Piston Stroke (about)		Air Inlet Thread (Pipe tap)	Air Hose Size		Average Air Consumption		ISO 15744		ISO 28927-10	
	Round		Hexagonal																Sound Pressure Level (L _{WA})	Sound Power Level (L _{WA})	Vibration Total Value (A _W)	Vibration Uncer- tainty (K)
	mm	in	mm	in		bpm	mm	in	kg	lb	mm	in	mm		in	in	mm	in	m³/min	ft³/min	dB(A)	dB(A)
PB-20(R,H)	17.5	5/8	14.7	9/16	1900	350	13 25/32	6.6	14.50	28.5	1 1/8	76	3	NPT 3/8	12.7	1/2	0.80	28.0	100	111	6.6	1.0
PB-30(R,H)	17.5	5/8	14.7	9/16	1500	397	15 5/8	7.1	15.60	28.5	1 1/8	102	4 1/62	NPT 3/8	12.7	1/2	0.80	28.0	100	111	7.1	1.1

Chisels (Optional Accessories)

(PLAIN TYPE)



(SHOULDER TYPE)



Distributed by

URYU SEISAKU, LTD.

Claims must be filed only with distributors within ten (10) days from delivery.