

UPT

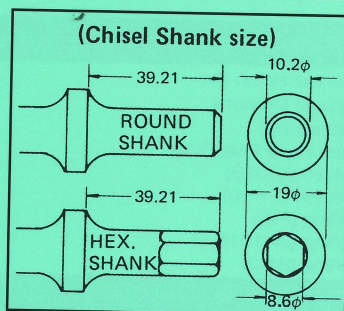
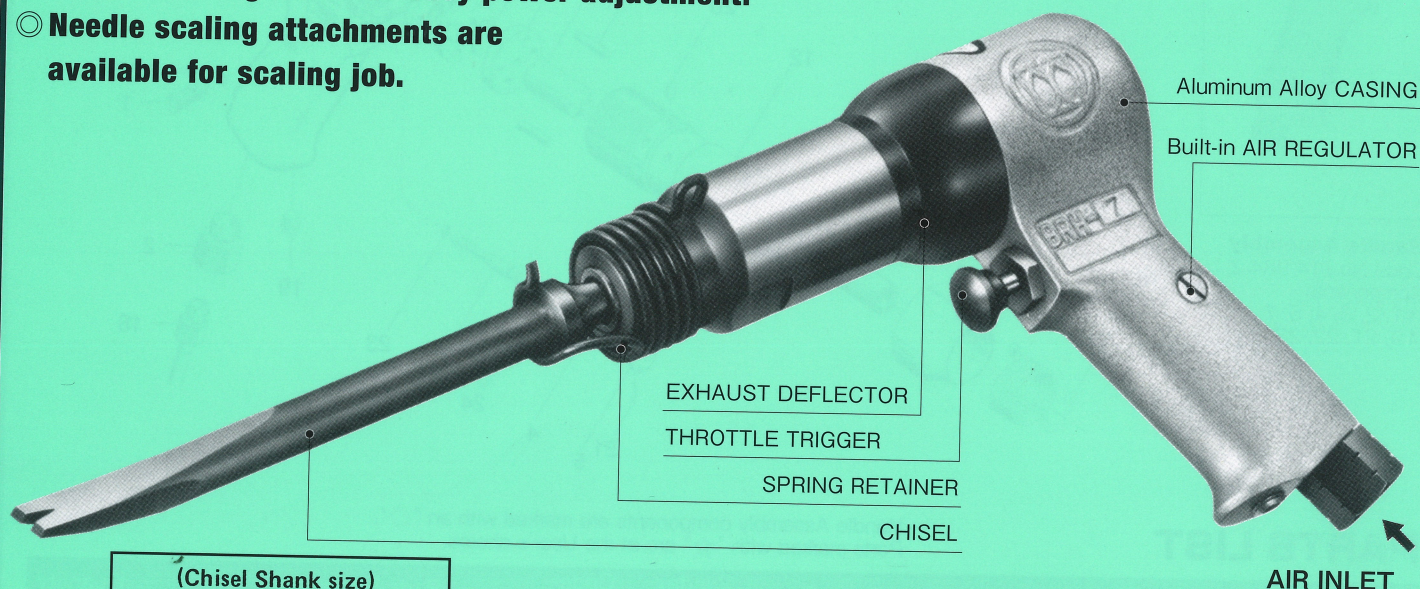
Uryu
Pneumatic
Tools

Automotive & Industrial Tools

BRH-7 SERIES AIR IMPACT CUTTERS

URYU BRH-7 series fast-hitting and powerful hammers are designed for all types of work including cutting, ripping, shearing and punching by various chisels.

- Built-in air regulator for easy power adjustment.
- Needle scaling attachments are available for scaling job.



IMPORTANT!!

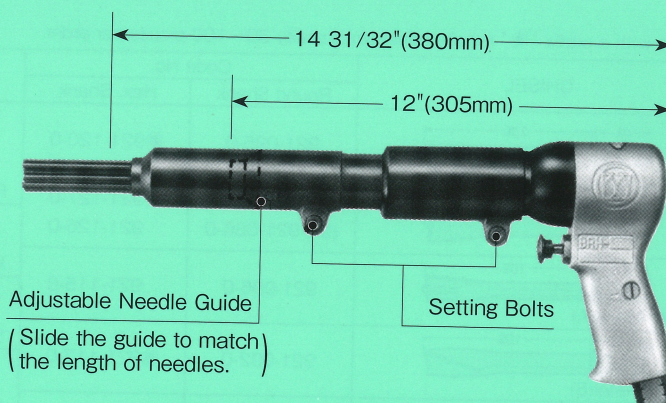
- Lubrication** — Supply light Spindle Oil properly through Air Inlet or Line Oiler every before and after operation. (for example MOBIL TURBIN OIL #32, SHELL TURBIN OIL #32 or equivalent).
- Dry & Clean Air** — Drain daily and install a Filter at or near the take-off point to prevent trouble from foreign matter.
- Air Hose & Fittings** — Use the Air Hose and other fittings of proper size and perfect condition.
- Chisel Retainer** — Use the most suitable chisel retainer required and specified by your local regulations.
- Avoid idle operation** — Operate the tool always on work with Chisel to avoid unnecessary troubles.
- Overhaul** — Regular overhaul once every three months is recommended to keep the tool in good condition.
- Air Pressure** — Recommended Air Pressure is 0.6MPa (85 psi)
- Genuine Parts** — Use only URYU's genuine spare parts for replacement.

Needle Scaling Attachment (Option)

This easy-to-equip Needle Scaling Attachment increases versatility to the BRH-7 series hammers as scaling tools for removing rust, scale and paint from any flat or irregular surfaces.

Sets available:

- for BRH-7(R) NA-21 (Needle: 2mm ϕ \times 27 pcs.) 881-046-1
 - NA-31 (Needle: 3mm ϕ \times 16 pcs.) 881-051-1
 - for BRH-7(H) NA-33 (Needle: 3mm ϕ \times 16 pcs.) 881-061-1
- (Special catalogue sheet is available)



SPECIFICATIONS (Subject to change without notice.)

Model	Bushing	Blows Per Minute (about)	Overall Length (about)		Weight less Chisel (about)		Piston Dia. x Stroke		Average Air Consumption (about)		Sound Pressure Level (L_{pA})	Sound Power Level (L_{wA})	Vibration Total Value (A_{vA})	Vibration Uncertainty (K)
		B.P.M.	in	mm	lb	kg	in	mm	ft ³ /min	m ³ /min	dB(A)	dB(A)	m/sec ²	m/sec ²
BRH-7 (R)	Round	3,400	6-39/64	168	3.6	1.64	3/4 x 1 31/32	19.05 x 50	17.0	0.48	100	111	7.5	1.1
BRH-7 (H)	Hex.	3,400	6-39/64	168	3.6	1.64	3/4 x 1 31/32	19.05 x 50	17.0	0.48	100	111	7.5	1.1

Air Inlet Thread (Pipe Tap) N.P.T. 1/4", Air Hose Size 3/8" (9.5mm)

※ The uncertainty in the sound levels is 3dB(A).

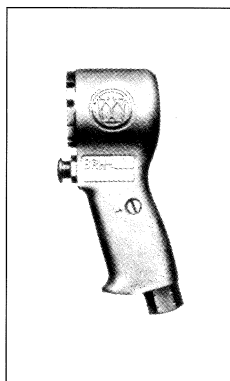


URYU SEISAKU, LTD.

Osaka, Japan

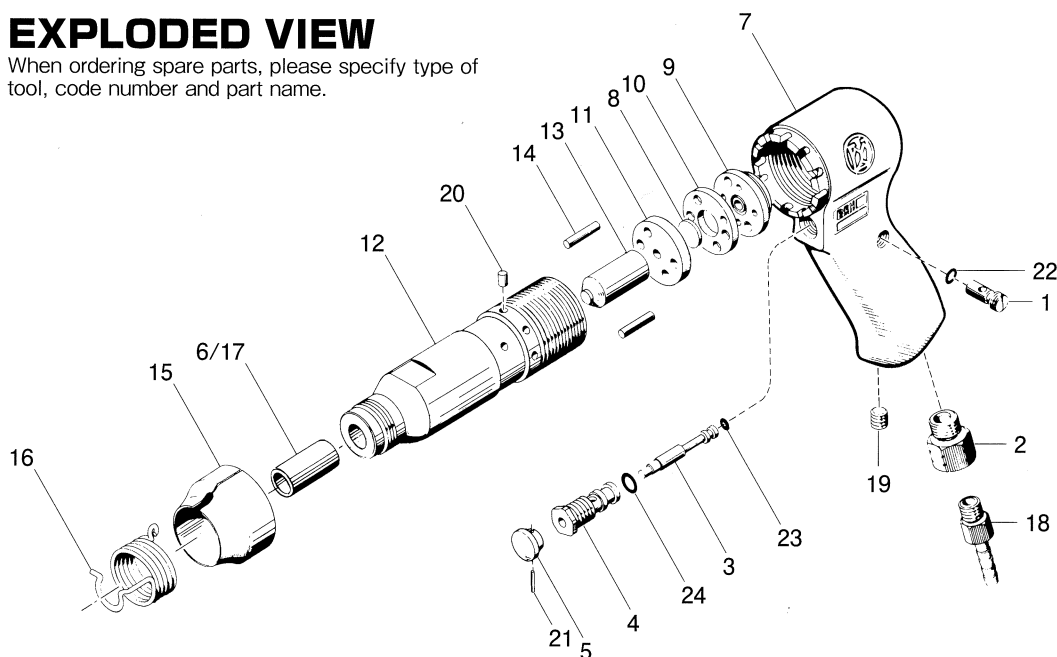
OKA-390-20-05-20-1025

BRH-7 SERIES AIR IMPACT CUTTERS



EXPLODED VIEW

When ordering spare parts, please specify type of tool, code number and part name.



Handle Assembly

Code No. 714-984-2

Components

(#1, 2, 3, 4, 5, 7, 19, 21, 22, 23, 24)

PARTS LIST

Handle Assembly components are marked with an "O".
Parts marked with "☆" are at the User's choice.

Index No.	Code No.	Parts Name	Quantity	Index No.	Code No.	Parts Name	Quantity
# 1	023-240-1	O Regulator Valve	1	#14	714-761-1	Cylinder Notch Pin	2
# 2	185-091-7	O Air Inlet Bushing	1	#15	714-782-1	Exhaust Deflector	1
# 3	603-100-2	O Valve	1	#17	786-567-1	☆ Bushing (H)	1
# 4	603-101-1	O Valve Bushing	1	#19	966-100-0	O Allen Head Plug (1/8)	1
# 5	603-107-2	O Throttle Trigger	1	#20	970-406-0	O Pin (H) (5×6.3)	1
# 6	705-567-1	☆ Bushing (R)	1	#21	973-010-0	O Roll Pin (2×10)	1
# 7	714-011-2	O Handle	1	#22	990-003-0	O O-Ring (P-5)	1
# 8	714-195-1	Main Valve	1	#23	990-203-0	O O-Ring (JW1516-3)	1
# 9	714-198-1	Rear Valve Seat	1	#24	990-610-0	O O-Ring (8×2)	1
#10	714-199-1	Valve Spacer	1	ACCESSORIES			
#11	714-200-1	Front Valve Seat	1				
#12	714-286-2	Cylinder	1	#16	714-813-2	Spring Chisel Retainer	1
#13	714-546-1	Piston	1	#18	940-116-0	Air Hose Nipple (NPT1/4x3/8)	1

Chisels with a prefix "●" require minimum quantity 30~100 pieces per order.

CHISEL	Code No.		CHISEL	Code No.	
	Round Shank	Hex. Shank		Round Shank	Hex. Shank
Blank 	921-095-0	●921-120-0	Fork 	921-097-0	●921-122-0
Flat 	(7") 921-087-0 (9") 921-086-0	921-127-0 921-126-0	Hammer 	921-098-0	●921-123-0
Sheet Metal(A) 	921-096-0	921-115-0	Scraper 	921-088-0	921-128-0
Sheet Metal(B) 	921-092-0	●921-117-0	Tail Pipe Cutter 	921-093-0	●921-118-0
Spot Weld Breaker 	921-085-0	921-125-0	Double Blade Panel Cutter 	921-089-0	●921-129-0
Taper Punch 	921-091-0	●921-121-0	Panel Crimper 	921-099-0	●921-116-0
Bushing Remover 	921-094-0	●921-119-0			

Distributed by

URYU SEISAKU, LTD.

Claims must be filed only with distributors within ten (10) days from delivery.